

Ontherocks HL

Designed by Antonio Citterio/assistant Toan Nguyen, 2004

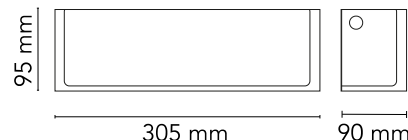


Halogen - 200W

Wall lamp providing direct/indirect and partially diffused light. Lamp body in transparent glass. Internal diffuser in opal glass. The wall mount is a white powder coated, aluminum alloy die-casting including both the wall fitting system and the electrical equipment.

Are you a professional and your project needs consulting and support?

BOOK AN APPOINTMENT



Main specifications

EAN	8059607020234
Mounting	Wall
Environments	Indoor dry location
Light Source Type	Bulb
Lamp category	Halogen
Lamp holders	R7S
Ilcos	HDG
Number of heads	1
Power (W)	200

Physical

Colour	Transparent
Net weight (kg)	2.52
Package height (mm)	205
Package width (mm)	490
Package length (mm)	190
Package volume (m3)	0.02
IP internal	20

Download

Mounting instructions	↓ PDF
Spare Parts	↓ PDF

Photometric Files

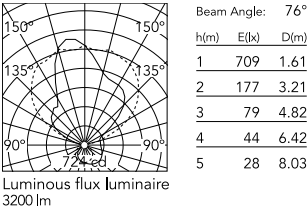
LDT / IES	↓ LDT
-----------	-------

Technical Drawings

2D	↓ ZIP
3D	↓ ZIP



Schematic light drawing



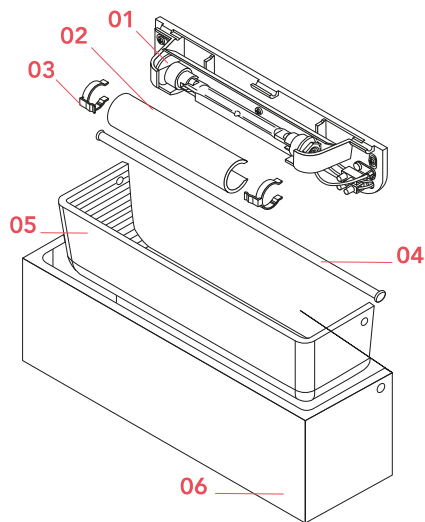
Photometric

Lighting type	Total
Light distribution	Symmetric

Electrical

Insulation class	I
Frequency (Hz)	50/60
Main voltage (Vac)	220-250
Dimmable	Yes
Dimming interface	Remote Dimmable (Dimmer Not Included)
Batteries inside	No
Charging min time	No

Spare Parts



- | | | |
|-----|---|-----------|
| 01. | Rts a10 cm 25 half lamp holder | RF13559 |
| 02. | Pochette Curved Protection Glass | RF11376 |
| 03. | Nickel spring for the curved protection glass | RF06356 |
| 04. | Rod assembly | RF4651200 |
| 05. | Ontherocks 1 hl internal white diffuser | RF13567 |
| 06. | Ontherocks 1 hl diffuser assembly | RF4651100 |

DOWNLOAD



RF13559

Rts a10 cm 25 half lamp holder



RF11376

Pochette Curved Protection Glass



RF06356

Nickel spring for the curved protection glass



RF4651200

Rod assembly



RF13567

Ontherocks 1 hl internal white diffuser



RF4651100

Ontherocks 1 hl diffuser assembly